



European Retaining Wall Solution for Infrastructure Projects

- + Simple Construction
- + Maximum Flexibility
- + Maintenance-Free & Durable



The Easyblock Retaining Wall System

The modular retaining wall system offers a wide range of possibilities for infrastructure projects and provides reliable stabilization for slopes and changes in terrain elevation.

- + Fast and Cost-Effective Construction
- + Flexible Wall Configurations
- + Structural Reliability
- + Dry Installation
- + Maintenance-Free and Durable
- + Natural Stone Appearance

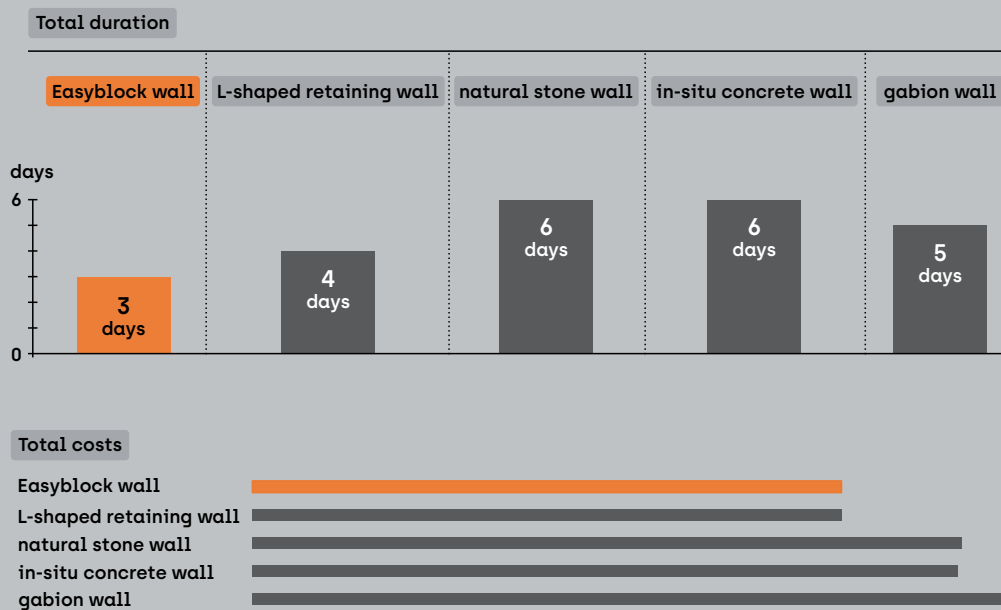
The flexible construction method allows the realization of customized wall configurations. From precisely fitting corners to individual curves and stepped transitions, the system offers exceptional versatility. Wall heights from 40 cm to well over 10 meters can be achieved. Easyblock is a European licensed product developed in Austria and proven throughout Europe for quality, durability and design flexibility.



+ Fast and Cost-Effective Construction

When an idea needs to become reality quickly, Easyblock stands out through its particularly simple and efficient planning and construction process. Using state-of-the-art planning software, different design options can be compared quickly, possibilities can be assessed at an early stage, and the construction phase can be planned efficiently. From excavation to the completed retaining wall, construction often takes only a few days. Thanks to dry installation and often without the need for a complex foundation, construction can be carried out quickly and efficiently. With a precise 3D laying plan, installation is carried out step by step, supported by a mini excavator and a two-person team. This enables significant progress to be made in a short period of time – economically, time-efficiently and reliably.

Example Installation Time and Cost Comparison: Retaining Wall 25 m Length + 2.0 m Height = 50 m²

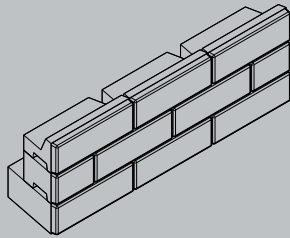


+ Maintenance-Free and Durable

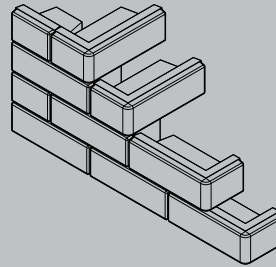
The modular block system requires no maintenance and is designed for long-term durability. Twenty-three coordinated block types provide maximum flexibility, cost efficiency and structural stability.

+ Flexible Wall Configurations

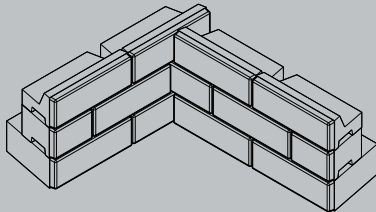
Starting at a wall height of just 40 cm, the Easyblock system offers virtually unlimited possibilities for flexible retaining wall construction. Even demanding terrain conditions and complex project requirements can be realized with ease, as the system adapts perfectly to a wide variety of site conditions. Whether straight, curved, stepped, inside or outside corners, structural safety always remains the primary focus.



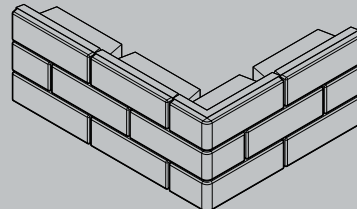
1 **Straight wall**
The simplest wall shape



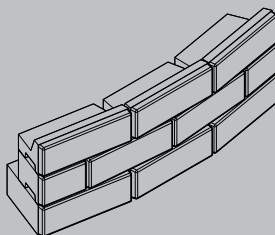
2 **Variable stepping options**
Design with corner blocks



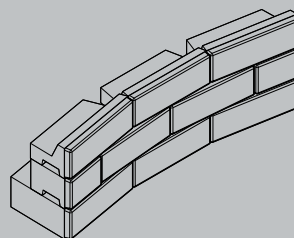
3 **90° Inside Corner**
Same blocks as for the straight wall



4 **90° Outside Corner**
Additional corner blocks



5 **Convex curve**
Maximum radius up to 20°



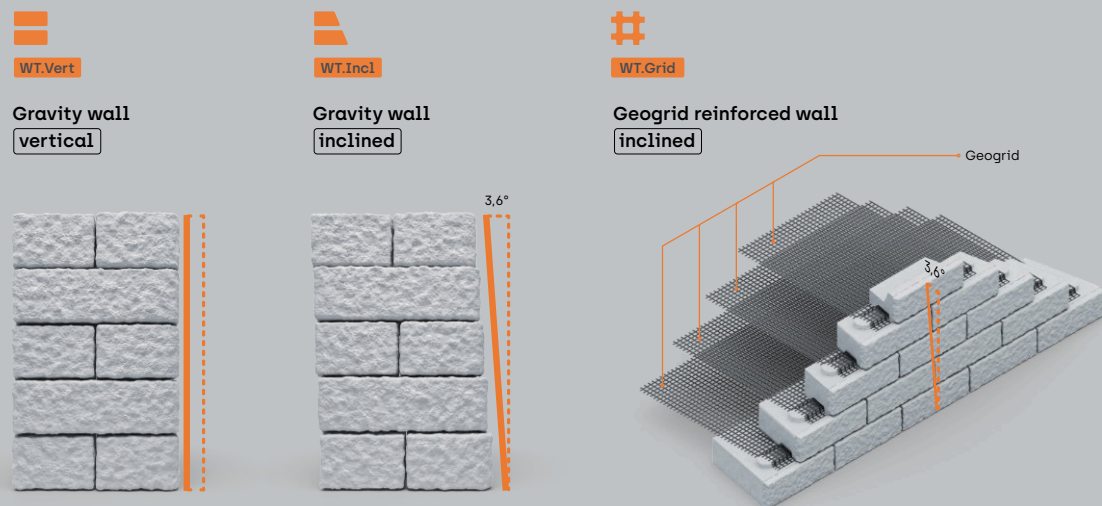
6 **Concave curve**
Maximum radius up to 20°

+ System Solution with Verified Standard Structural Design

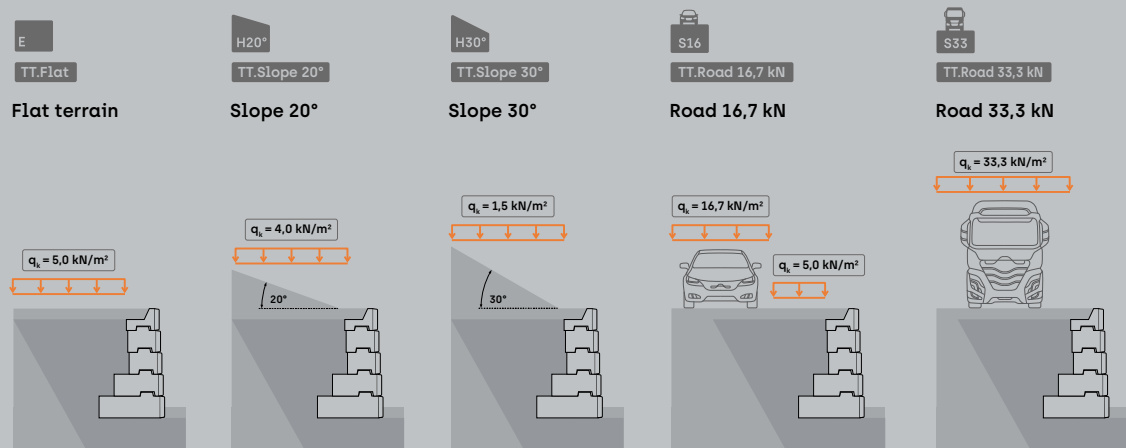
The Easyblock system with 23 block types is a flexible modular solution based on verified standards. This ensures optimum cost transparency and provides a reliable basis for planning and cost estimation.

The standard structural design documentation covers vertical and inclined gravity retaining walls as well as geogrid-reinforced retaining walls for various terrain types, load cases and soil conditions. The structural design is based on Eurocode 7 (EN 1997) and provides a reliable foundation for the planning and realization of retaining wall projects.

Wall types



Terrain types



+ Natural Stone Appearance

The available surface finishes blend harmoniously into any environment and emphasize the natural character of the retaining wall. Precise corner detailing without visible chamfers ensures a particularly high-quality and uniform appearance. Whether you choose the Granite Design or the Rock Design, Easyblock allows you to realize your architectural vision while maintaining durability and long-term performance. All Easyblock blocks are maintenance-free and designed for long-term use.



Stone Surface
Granite stone texture

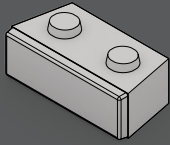


Stone Surface
Rock texture



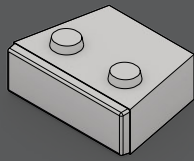


Base Blocks



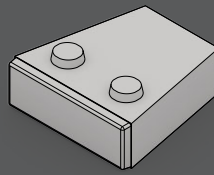
B60

639 kg
120 × 60 cm



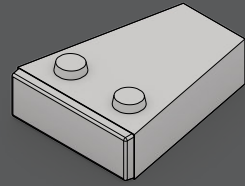
B90

904 kg
120 × 90 cm



B120

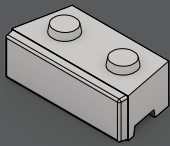
1.077 kg
120 × 120 cm



B150

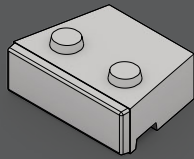
1.240 kg
120 × 150 cm

Standard Blocks



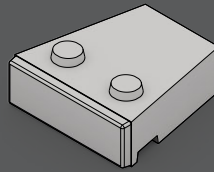
S60

585 kg
120 × 60 cm



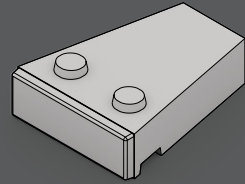
S90

850 kg
120 × 90 cm



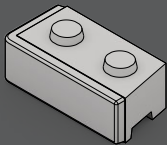
S120

1.005 kg
120 × 120 cm



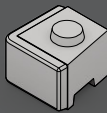
S150

1.190 kg
120 × 150 cm



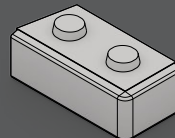
S60-L

613 kg
120 × 60 cm



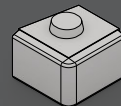
S60-LH

296 kg
60 × 60 cm



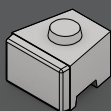
S60-R

613 kg
120 × 60 cm



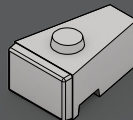
S60-RH

296 kg
60 × 60 cm



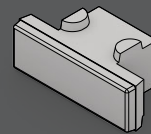
S60-H

267 kg
60 × 60 cm



S90-H

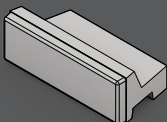
362 kg
60 × 90 cm



S60-FB

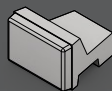
389 kg
120 × 60 cm

Top Blocks



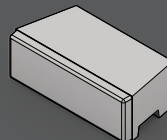
T60

381 kg
120 × 60 cm



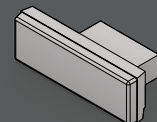
T60-H

178 kg
60 × 60 cm



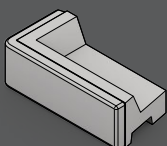
T60-F

530 kg
120 × 60 cm



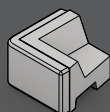
T60-FB

281 kg
120 × 60 cm



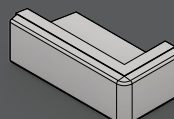
T60-L

438 kg
120 × 60 cm



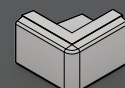
T60-LH

234 kg
60 × 60 cm



T60-R

438 kg
120 × 60 cm



T60-RH

234 kg
60 × 60 cm





